

Problem

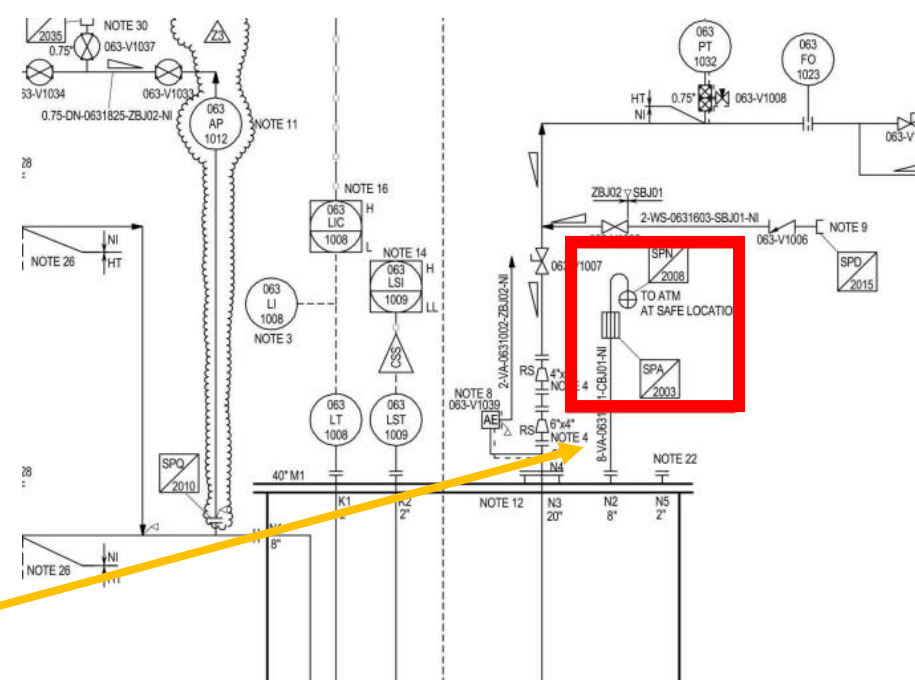
Downstream

Corrosion from this pipework section deposited at downstream of flame arrestor (FA)



Upstream

Non-hazardous, open drain system



Corrosion deposits



Upstream



Downstream (Top of FA)



Potential Solutions Brainstorm

- Replace piping for different material piping (currently carbon steel)?
- Apply internal coating?
- Inspect and clean internals periodically? Not very practical or realistic long-term
- 316 stainless direct replacement
- New Carbon steel direct replacement with internal coating
- Current carbon steel pipe repaired in-situ with internal coating